

Staff **News 'n' Views**

St Helens and Knowsley Teaching Hospitals NHS Trust

Issue 24 October 2009

It's a
DOUBLED DOUBLE



Only Acute Trust - non FT - in the whole country to get DOUBLE EXCELLENT for 2nd year running

Plus: Breast Cancer Awareness month the Burney Breast Unit goes pink!

See inside for more details



What's inside:



Our Flu Jab Heroes

HSJ AWARDS 09 FINALIST

HSJ Judges Visit

Plus: Lots, lots more inside



Employee of the Month



August: Carolyn Barton
Pharmacist

Reason for Nomination:

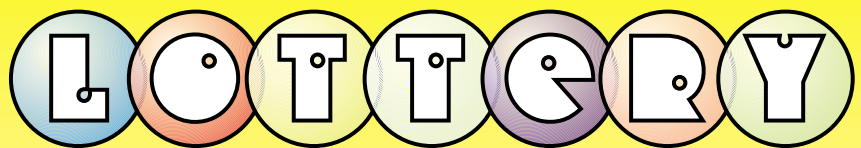
Carolyn or 'Carrie' as she is known to her friends and colleagues is brilliant with patients and ensures that they are fully informed about their medication, taking time to explain exactly what their medication is for. She always ensures that adequate supplies are maintained and visits the pharmacy several times a day to have requests processed and brings medication back to the ward herself, so that staff on the ward can continue to care for patients.



September: Nicola Gearing
Staff Nurse, Ward F1

Reason for Nomination:

Nicola is extremely committed to improving the care of patients with dementia. She has taken an active role in the delirium prevention programme at the Trust and has been involved in trialling new care plans on the ward as well as creating a reminiscence therapy board to help patients interact with each other. Nicola's input and enthusiasm is second to none and she is a fabulous addition to the team.



TRUST RESULTS

The lottery winners for draws which took place in August and September are:

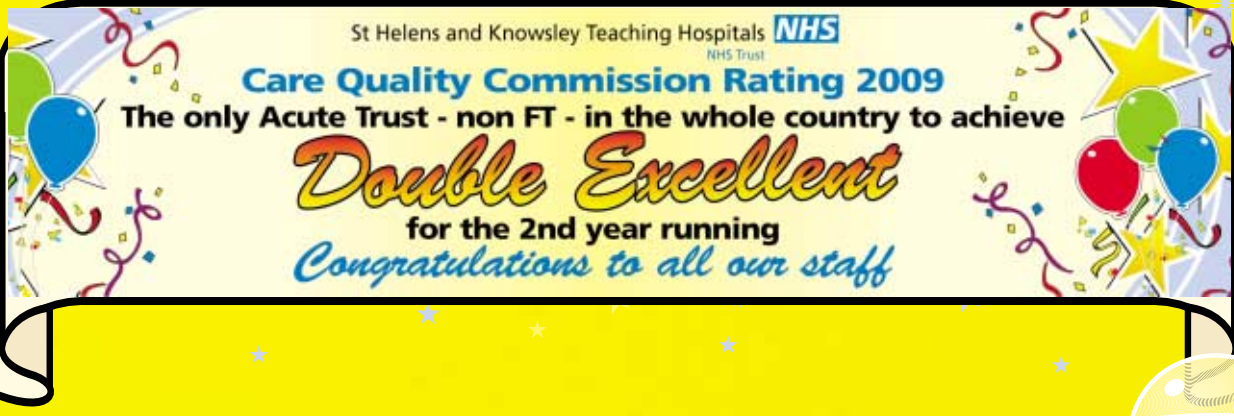
August 2009

- £1,500 Helen Kirk, Ward G2, Whiston
- £500 Elizabeth Finnegan, Ward G1, Whiston
- £100 Jacqueline Clarke, Intensive Care Unit, Whiston
- £50 Emma Edwards, Cardiology, Whiston
- £25 Jacqueline Vose, Ward H1, Whiston
- £25 Rosina Kennedy, Plastic Surgery Operating Theatres, Whiston

September 2009

- £1500 Melanie Kelly, Community Midwife.
- £500 Albert Agyeman, Medical Dental Practitioner
- £100 Julie Kysh, Intensive Care Unit, Whiston
- £50 Pam Hill, Pay & Staff Services, Whiston
- £25 Stacey Lowe, Duffy Suite, St Helens
- £25 Merea Gilbert, X-Ray Department, Whiston

Note: Prizes can only be issued to lottery participants who have paid all due contributions. In the case of deductions not being made from your pay, please contact the Finance Department on extension 1121. Your payslip should show a separate deduction described as LOTTERY and the amount deducted (£1 for each number).



The Trust is the ONLY Acute Trust, which is not a foundation trust, in the whole country to achieve the top rating of 'DOUBLE EXCELLENT' for the second consecutive year in a comprehensive assessment of every single NHS Trust in England.

The Care Quality Commission has rated the Trust's overall performance as:

- ✓ **EXCELLENT** for the quality of services provided to patients and
- ✓ **EXCELLENT** for the use of its resources

The report also noted that for quality of services:

- ✓ Core standards were **FULLY MET**
- ✓ Existing commitments were **FULLY MET**
- ✓ Achieving national priorities were **EXCELLENT**

The superb scores have been given because the Trust fully meets core standards, along with existing and new national targets, as well as offering excellent value for money.

Ann Marr, Chief Executive said: "This is fantastic news for the Trust and is a tribute to the tremendous hard work and dedication of each and everyone of you. It is great news for our patients because it is further proof of our commitment to providing them with the very highest possible standard of healthcare.

The scores are particularly impressive as during this time we opened the new St Helens Hospital and have continued building the new Whiston Hospital, yet we have continued to meet and exceed national targets for waiting times, infection rates and all other performance indicators."

Annual General Meeting 2009

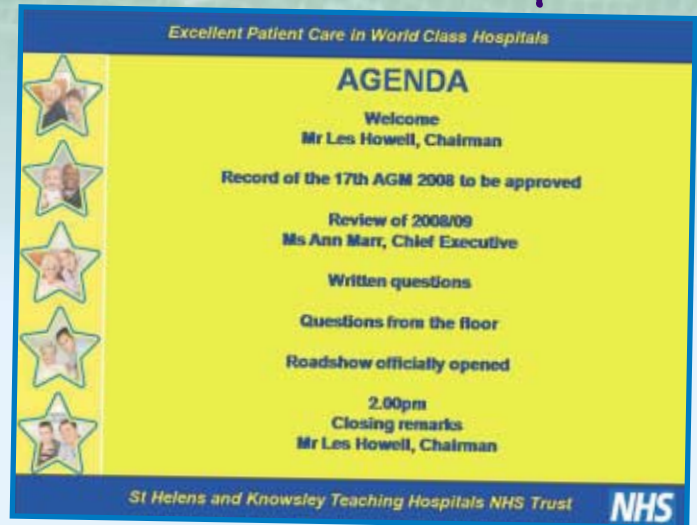
Excellent Patient Care in World Class Hospitals

Over 130 staff, patients and members of the public as well as the Mayor of St Helens; Cllr Terry Shields attended this year's Annual General Meeting held in the Recreation Hall at Whiston Hospital.

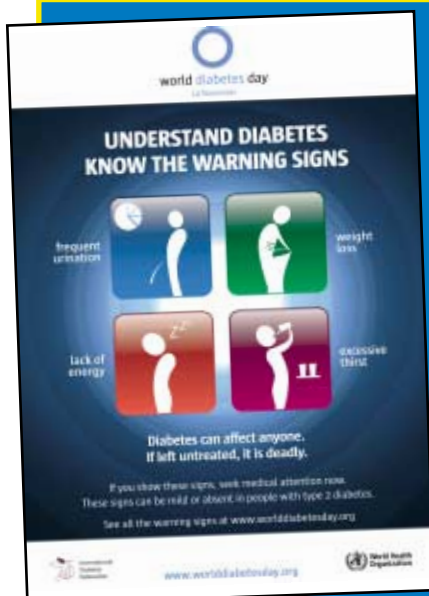
Chairman, Les Howell opened proceedings, thanked everyone for attending and remarked on the Trust's recent shortlisting in the HSJ Awards. Ann Marr, Chief Executive, then followed with a presentation outlining the Trust's increased activity, performance and big achievements for the year April 2008 – March 2009 such as:

- Gaining the highest rating of **DOUBLE EXCELLENT** in the annual healthcheck
- Becoming the only North West Trust to get top marks in the Hygiene Code
- Achieving an 'Excellent' rating in the Patient Environment Action Team assessment, in each category for both hospitals for the last 4 years
- Opening the new St Helens Hospital in October 2008, on time and within budget
- The ongoing development at Whiston Hospital, which is due to open in April 2010, 6 months ahead of schedule

The AGM also provided different departments in the Trust with an opportunity to showcase their successes and achievements with a 'roadshow' of exciting display stalls. These included; the Finance department, Nursing, Surgical Care Group, Medical Care Group, Governance, Patient Liaison, Informatics, Infection Control, Clinical Support Services, Human Resources and Strategic Development.



Display stalls showcasing our talents



D-DAY FOR DIABETES

The Diabetes team are holding an Open Day at the Diabetes Centre in St Helens Hospital on Wednesday 18th November to follow World Diabetes Day.

To highlight this year's theme of diabetes education and prevention, the team will be showcasing their Diabetes UK Shared Practice award-winning scheme; Diabetes Education through Adult Learning (DEAL). The scheme empowers patients by giving them the skills and confidence to manage their condition, through group sessions incorporating a range of interactive educational tools.

The day, which runs from 10am to 3pm, is open to patients, staff, visitors and anybody who would like to know more about diabetes. Among the awareness raising activities, there will be an educational session on maintaining a healthy lifestyle with diabetes and a patient will talk about their experience of living with diabetes.

Dr Kevin Hardy, Consultant Diabetologist and Director of Clinical Strategy said: "Our specialist team are really passionate about supporting local people with diabetes and our patients rate our care as second to none."

"The Open Day is a fantastic opportunity for people to come and meet the team and find out about the range of services we offer to patients. We want to see as many people as possible benefiting from the excellent service we provide, so please come along to find out more!"



Our Flu Jab Heroes

The seasonal flu and now swine flu vaccination programmes are underway and staff at the Trust are having their vaccinations and becoming 'Flu Jab Heroes'.



Professor Griffiths, Consultant gets his Swine Flu jab as other front line staff wait in line

The Trust has started vaccinating selected front line staff against swine flu and has a target to achieve of vaccinating 80% of staff in order to protect them from getting flu and passing it on to their families and friends or to the patients that they care for.

Occupational Health have trained several members of staff to give out the vaccines and these 'jabbers' have been working around the clock, visiting all wards and departments throughout both hospitals to vaccinate staff.

Front line staff to be vaccinated against swine flu will be those in Accident & Emergency, Intensive Treatment Unit, Respiratory, Paediatrics and Maternity.

'Seasonal Flu Vaccination Days' have been set up in the restaurants at both St Helens and Whiston hospitals to allow staff to drop in and have their jabs. Karen Brayley, Occupational Health Manager and Gill Core, Director of Nursing, Midwifery and Governance, vaccinated

members of the Trust Board, who are backing the programme. The campaign has also received the support of St Helens Mayor, Councillor Terry Shields and St Helens Rugby League legend Paul Sculthorpe, who came to St Helens Hospital to have their seasonal flu jabs.



Joanne McClory, Occupational Health Nurse, giving Mike Lynch, Medical Director his Swine Flu jab.



Karen Brayley, Occupational Health Manager, gives Alistair Mulvey, Finance Director his injection



Tennyson Idama, Consultant and Clinical Director for Obstetrics and Gynaecology gets a jab in the arm from Emma Knowles, Screening Nurse



St Helens Mayor, Councillor Terry Shields, getting his flu jab at St Helens Hospital



Paul Sculthorpe, St Helens Rugby legend and now Flu Jab Hero at St Helens Hospital



Breast Awareness at the Burney Breast Unit

The Burney Breast Unit provides a one-stop clinic with rapid access for patients with Breast Cancer and our dedicated team of clinicians and specialist nurses care for over 4000 patients a year.

Wear it Pink

To help bring attention to Breast Awareness Month in October, the team at the Burney Breast Unit took part in the national 'Wear it Pink Day' campaign. Together with staff from the Lilac Centre and the new Macmillan Cancer Support Information Centre, the team brought some colourful cheer to the day and raised money for the Breast Cancer Campaign.



Staff from the Burney Breast Unit, the Lilac Centre and Macmillan Cancer Support 'wear it pink' at St Helens Hospital

Pioneering surgery



L-R: Louisa Mahon, Breast Care Nurse Specialist, Hannah McGowan, patient and Professor Riccardo Audisio, Consultant Surgical Oncologist

Surgeons at the Burney Breast Unit in St Helens Hospital are pioneering advanced surgical techniques to operate on patients with breast cancer.

Using a combination of two ground-breaking procedures, they are treating early detected breast cancers more effectively. The techniques allow surgeons to accurately pinpoint small tumours so that they can be removed, along with the areas where the cancer would be likely to spread. These new procedures not only remove the cancer with greater accuracy, but help to significantly reduce scarring following surgery, providing patients with outstanding cosmetic results, a fast recovery and a much better quality of life.

Hannah McGowan, 74 from Newton-le-Willows underwent breast cancer treatment at the Burney Breast Unit using these new techniques. Hannah said: "When I was diagnosed with breast cancer, I was fortunate to have been selected for this new treatment. All the staff at the Unit reassured me and gave me the confidence that I could beat the cancer. Now I feel smashing, I've had no problems and all I have for a scar resembles a small pen mark. It's great that this new treatment is available in the local area."

Burney Breast Unit receives a 'Golden' thank you

The Burney Breast Unit is delighted to have received a generous and thoughtful donation from one of their patients.

Mrs Isabel McClements and her husband Tony McClements from St Helens raised £420 through raffles and donations at their Golden Wedding Anniversary.

Isabel and husband Tony came up with the idea of asking for donations instead of presents from their family and friends to thank Miss Leena Chagla, Consultant Surgeon & Lead Clinician along with the rest of the team who cared for her at the Burney Breast Unit.



Mr Tony McClements and Mrs Isabel McClements (centre) with Miss Leena Chagla and the rest of the Burney Breast Unit Staff

Arts for Health at the

Patients at the award-winning Lilac Centre are taking part in a new scheme employing their artistic talents to produce a vibrant healthcare environment and help them on their healing process.

The Arts for Health project, being implemented by the Trust follows increasing evidence that engaging with the arts can lead to a faster recovery and help boost morale for patients.

As part of the project, patients at the Lilac Centre are being encouraged to design a glass art work. This colourful mood reflective artwork will be on display in the treatment rooms and corridors of the Lilac Centre allowing patients, visitors and staff to leave their own mark of history.

The project is being helped by specialist glass artist Lucy Hall. Lucy said "This is a fabulous project and I have been touched by each individual's energy and enthusiasm to produce wonderful art for a wonderful reason."



L-R: Gillian Ball, patient, Lucy Hall, artist, Phil Walker, Staff Nurse and patients; Gillian Heaps, Freda Toole, Shelia Lawrenson and Reverend Jeff Engel



Some of the finished glass sculptures

CHANTELLE SHINES AGAIN FOR THE LILAC CENTRE



Chantelle Fletcher, Catering Assistant with Marion Molyneux (left) and Lilac Centre Unit Manager Barbara Jost (right) surrounded by some of her supportive colleagues.

The Lilac Centre has received another fantastic donation from one of the Trust's catering staff.

Catering assistant Chantelle Fletcher has again raised £500 for the Lilac Centre, at St Helens Hospital through a sponsored slim. Chantelle lost 3 stone after her first sponsored slim and this time she has lost an incredible 6 stone.

Her commitment to raising money for the Lilac Centre came after her uncle, who was treated at the Lilac Centre, sadly passed away.

Chantelle said "The Lilac centre is very close to my heart and I am pleased to have raised so much money as the staff do a fantastic job and all patients receive excellent care and treatment."

Barbara Jost, Lilac Centre Manager said "Chantelle is an inspiration, this is her second donation in 6 months. This fantastic and very generous donation is greatly appreciated and will go towards a new sensory room at the Lilac Centre.

**WE ARE
MACMILLAN.
CANCER SUPPORT**

Macmillan Centre Opened



Mayor Terry Shields cutting the ribbon with L-R: Christine Taylor, Centre Manager, Maureen Rutter, Macmillan Cancer Support Director for the North, Ann Marr, Chief Executive, Mayoress Mrs Julie Shields and Jayne Coyne, Assistant Manager.

The new Macmillan Centre at St Helens Hospital was officially opened by the Mayor of St Helens Councillor Terry Shields on September 24th.

The Mayor was joined by Ann Marr, Chief Executive and Maureen Rutter, Macmillan Cancer Support Director for the North of England in opening the centre along with staff and guests.

Ann Marr, said: 'Caring for cancer patients often involves looking after their loved ones and in doing so we are proud to work with our respected partners Macmillan Cancer Support. This new centre will provide patients, their families and friends with a

vital resource to help them deal with the illness. I look forward to building on the care that we provide to patients with the help of Macmillan Cancer Support.'

The centre on the ground floor, opposite the Spice of Life restaurant, will provide advice and support relating to cancer. The centre's opening hours are: 9.30am - 4pm, Monday to Friday. For further information contact Christine Taylor, Centre Manager or Jane Coyne, Assistant Manager on 01744 646985.



3D Footscanner up for innovation award

The Orthotics department has been nominated for a top award for its pioneering use of a new innovative 3D imaging technology to provide orthopaedic patients with custom made footwear.

The FotoScan 3D Foot Scanner has been shortlisted in the North West NHS Innovation Awards. NHS Knowsley is the first trust in the country to use this scanner, which is based in St Helens Hospital. The scanner creates an instant and precise 'digital cast' of the foot. This allows the orthotist to measure the foot with pinpoint accuracy, taking into account its unique shape and any skin conditions.



The foot is scanned using the latest technology

The data can then be used to create custom made footwear and insoles for patients, providing a 98% first time fit rate for bespoke orthopaedic shoes. This means that patients get a much better service with shoes perfectly fitted.

The Trust is delighted that the Orthotics team has been shortlisted for this prestigious prize for innovation and wishes them the very best of luck.

Ian Spencer, Head of Orthotics, demonstrates a 3D foot model.



HSJ Judges Impressed

HSJ
AWARDS
09
FINALIST

The Trust's bid to win Acute Healthcare Organisation of the Year in the HSJ Awards took a big step forward, following a visit from the members of the judging panel.



Kevin Hardy, Director of Clinical Strategy outlines the Trust's Peak Performance to the HSJ judges

various members of staff who described the Trust's story with the help of illustrative boards (see overleaf).

The judges then sat in on a feedback session following a quality ward round on ward D3 and learnt about how we are successfully applying 'lean' techniques to ensure equipment is properly stored and easily accessed by staff, so that nurses can spend more time directly caring for patients.



HSJ judges sitting in on a quality ward round feedback session on ward D3



Gwen Pantak, Ward Manager explains the lean principles to the judges

After a short viewing of the new Whiston Hospital building, the judges were taken to St Helens Hospital to see how the Trust's vision for world class hospitals is being put into action. Here they visited the Burney Breast Unit and the Lilac Centre and the judges were then introduced to one of our patients; Carole Lindberg, who described her experience of the excellent care provided by the Trust. The day finished with the judges sampling some of the nutritious and delicious patient meals in the Spice of Life restaurant.

Thanks to a huge team effort from everyone involved, the day was a huge success and the judges seemed extremely impressed with what they saw and heard. The results will be announced at the HSJ awards ceremony on 30th November.



Justin Woodley, General Manager, Medirest presenting judges with a sample of some of the nutritious Steamplicity patient meals



Patient, Carole Lindberg, talks to the judges about her the excellent care she was provided with



Our Vision for

Our vision - we are aiming for 5 star patient care where we provide an: *excellent experience, for every patient, every time.*

OUR VISION
 EXCELLENT CARE IN WORLD CLASS HOSPITALS

H EXCELLENCE

★★★★★
 5 STAR PATIENT CARE

AN EXCELLENT EXPERIENCE
 EVERY PATIENT
 EVERY TIME

THE DREAM

"I was treated like I was the only patient in the world, like they were all here just for me. I felt like a Queen"

EXCELLENCE

WELCOMING
 SAFE
 INFECTION FREE
 EFFICIENT
 PATIENT-CENTRED
 RELIABLE

EXCELLENCE
 BEST PRACTICE
 HIGH QUALITY
 EVIDENCE-BASED

EXCELLENCE
 EFFICIENT
 PATIENT-CENTRED
 RELIABLE

EXCELLENCE
 EFFICIENT
 PATIENT-CENTRED
 RELIABLE

St Helens and Knowsley Teaching Hospitals **NHS**
 NHS Trust

H OLD

HOSPITAL POOR PERFORMANCE

7th WARD AT CRISIS HOSPITAL

TRANSFORMING HEALTH CARE

ST HELENS HOSPITAL 2008

HOSPITAL TRUST RATED AS 'DOUBLE EXCELLENT'

GOOD TO GREAT

HATS OFF TO HIM AND TOP TEAM AT HOSPITAL

H NEW

TRUST MUST IMPROVE PATIENT CARE

TRUST UP FOR TOP AWARD

TOP MARKS FOR HOSPITAL HOSPITAL TRUST IN AWARDS FINAL

WHISTON HOSPITAL 2010

Transforming healthcare - Over the last 6 years the Trust has been transformed from a failing organisation to one of the country's top performing acute Trusts, recognised for best practice and delivering excellent patient care in world class hospitals.

Peak Performance – we are a high flying Trust with trail-blazing achievements in hygiene, low infection rates and peak performance, as we push the boundaries towards providing 5 star care.

PEAK PERFORMANCE

TEAMWORK

CHANGE

LEADERSHIP

HIGHEST EXCELLENCE

LOWEST INFECTION RATE

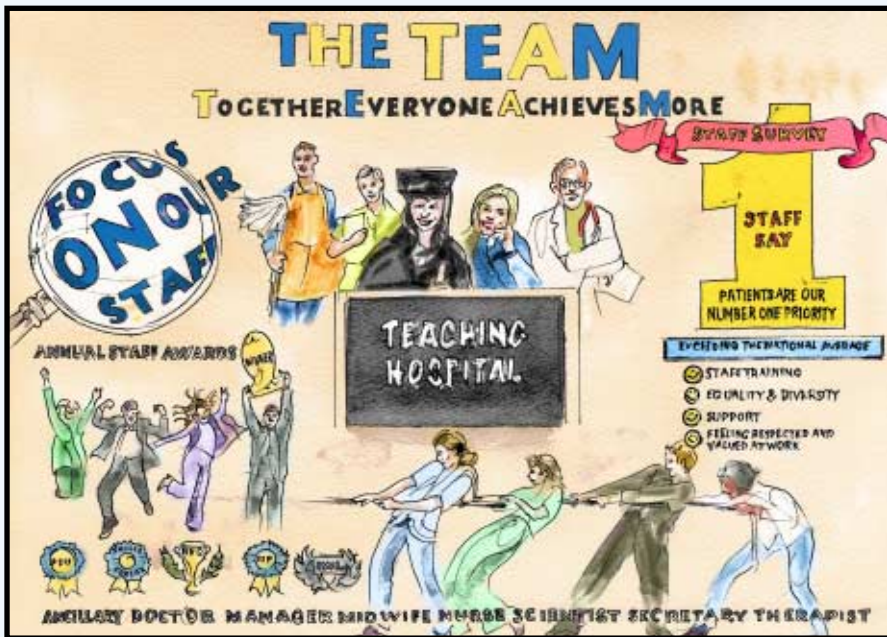
LOWEST INFECTION RATE

ADVANCING QUALITY

DOUBLE EXCELLENCE

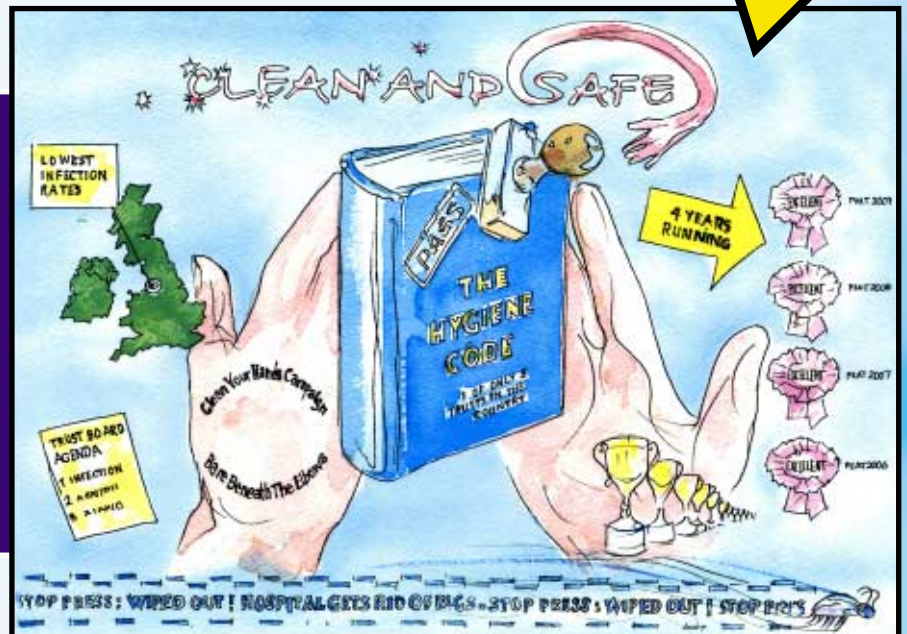
HIGIENE CODE TOP MARKS

5 Star Care



The team -
Together Everyone Achieves More. Staff feel respected and valued by managers and recognise that the Trust's No.1 Priority is the Patient.

Clean & safe -
4th lowest MRSA infection rate in the country, top marks in the Hygiene Code, 'Excellent' in PEAT for the 4th year running at both sites – maintaining a clean and safe environment for patients.



Innovation – The only Trust in the country to employ prosthetists through burns and plastics, patient's health records made available at the click of a mouse, ground breaking knee surgery carried by our Orthopaedic surgeons for the first time outside Australia, pioneering breast cancer surgery, the transformation of Microbiology services.



Your **NHS** Pensions Choice

Important changes taking place relating to the NHS Pension Scheme came into effect from 1st October 2009.

In April 2008, two sections of the NHS Pension Scheme were created under the NHS Pensions Choice Exercise (NHSPCE). From 1st April 2008, new staff who joined the NHS pension scheme joined what is called the '2008 Section', whereas staff who were already members of the NHS pension scheme on or before 31st March 2008 were members of the '1995 Section'.

There are a number of differences in the benefits for members of each section and those in the 1995 Section are being given the opportunity to choose whether they wish to change to the 2008 Section. The key differences are:

1995 SECTION

Protected normal pension age of 60 (55 for members of the special classes and Mental Health Officers)

Retained final salary and the accrual rate of 1/80th with a fixed lump sum of 3/80ths but the ability to increase this up to a maximum of 25% of the overall value of the pension

Retained best of the last 3 years pay which is used to calculate retirement pension

Ability to voluntarily protect pensionable pay where members age 50 or over decide to reduce their commitment and their pay.

Two tier ill health retirement arrangements

2008 SECTION

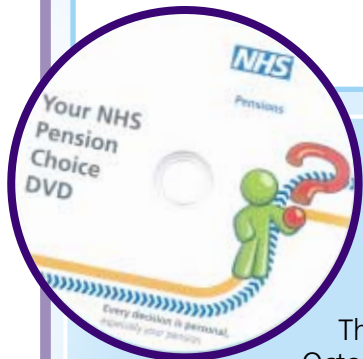
Increase in the Normal Pension Age to 65

Increased accrual rate of 1/60th based on pension with no automatic lump sum, but with the option to commute part of the pension for a lump sum payment

Final pensionable pay based on the average of the best 3 consecutive years in the last 10 years of service

Ability to draw down pension prior to retirement

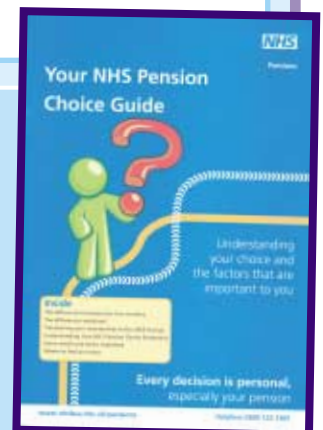
Pension enhancements available for those who work beyond age 65 ability to rejoin the scheme after retirement and build another pension



From July 2010, a Pensions Choice Pack will be sent out to NHS staff working in the North West. This will contain guide booklets, a DVD, your Personalised Pension Choice Statement and your forms, providing all the information and guidance you will need to make this important choice.

Those members of the 1995 Section who retired on or after October 1st 2009 are eligible to be offered the opportunity to make their NHS Pensions Choice as at the date of retirement and can apply to receive their Pension Choice Pack before July 2010.

Further information regarding NHSPCE go to: www.nhsbsa.nhs.uk/pensions or contact Karen Griffiths, Pam Hill or Pam Langton in the Pay & Staff Services / Pensions Team on extension: 1115. Please note P&SS/ Pensions staff can only provide information on the Choice Packs, they cannot advise you on which choice to make.



What is the NHS Constitution?



The NHS Constitution is a written document that brings together, for the first time, the principles, values, rights and responsibilities that underpin the NHS. It is designed to renew and secure our commitment to the lasting principles of the NHS, making sure that the NHS continues to be relevant to the needs of patients, public and staff in the 21st century.

The constitution outlines 7 main principles:

1. The NHS should be for everyone whatever their age, sex, race, disability, sexual orientation, religion or belief.
2. To have free health care as far as possible, as long as Parliament agrees or says you can.
3. We will give high quality care
4. We will involve patients and carers in deciding about their care.
5. We will work with other services to give better health care.
6. We will spend tax payers' money carefully.
7. We will be open about how we spend the money.

The Constitution outlines a number of rights, responsibilities and pledges for staff and patients including the following:

PATIENTS		
RIGHTS	RESPONSIBILITIES	PLEDGES
To have free health care as far as possible	To look after your health	To make sure it is easy to access health services
To have high quality care	To register with a doctor	To make sure health services are high quality
To have medicines that have been approved by the National Institute for Clinical Excellence	To be polite to NHS staff and other patients	To screen people who might have health problems
To be treated fairly and with respect	To provide us with the right information	To give you copies of letters about your care
To say what care you do or do not want	To keep appointments or let us know if you can't make them	To give you the information you need to help you make choices about your care
To be given information about your care	To do your best to do what the doctor tells you	To work with you, your family and carers
To choose your doctor	To let us know how your treatment has affected you	To listen and learn from what you say if you complain about services
To be involved in making decisions about your care	To provide us with the right information	

STAFF		
RIGHTS	RESPONSIBILITIES	PLEDGES
To have a good place to work	To take responsibility for what you do	To make it clear what we expect from staff
To have fair pay	To look after your own health and safety and that of those around you	To give good training and support
To be involved in making decisions	Not to discriminate against patients or other staff	To help them stay safe and well
To be treated fairly	To work with patients and to provide a better service	To involve them in making decisions
To complain if you are not happy	To involve patients in making decisions	



Watch out for future updates on the NHS Constitution and what it means for the Trust...

For more information on the NHS Constitution or to order your own FREE copy; call 0300 123 1002, visit www.orderline.dh.gov.uk or write to: DH Publications Orderline PO Box 777 London SE1 6XH.

Family's amazing £3,581 donation to Burns Unit

The family of Sean Bowers who sadly died in October 2007 from burns injuries, have raised a staggering £3,581 for the Mersey Regional Burns Unit at Whiston Hospital.

This amazing donation is from a range of fundraising events organised by Sean's family to pay tribute, raise awareness of fire safety and highlight the fantastic work being carried on the Burns Unit.

Sean's mum Tammy Rogers and his cousin Tricia Daniels visited the Trust to present their cheque to the Burns Unit. Tammy said: "We wanted to create a legacy for Sean's two daughters Sophie and Paige to promote fire-safety and help other people to survive their burns injuries so that his tragic death can help others to live."



Sean Bowers' mum Tammy Rogers (centre right) and cousin Tricia Daniels (centre left) present their cheque to Donnas Wilkinson, G1 Ward Manager (centre) and the members of the Burns Unit team

These events include a sponsored walk in Sean's home town of Prestatyn on his first anniversary, followed by a fun day in February 2009, in Stockport, Sean's birth town and in July, family and friends held a pram race in fancy dress.

This October, Sean's 2nd anniversary was commemorated with another family Fun Day in Prestatyn to raise more money for the Unit.

Such amazing donations are hugely appreciated by the Trust and will be used by the Mersey Regional Burns Unit to continue to provide vital services to burns victims from Merseyside, Cheshire, North Wales and the Isle of Man.



L-R: Dr Maysara Aziz, Gill Haydock, Nurse Practitioner, Cllr Paul Shaw, Dr Laweh Amegavie and Dr Abubaker Elbadri. Front: Emily and Beth Shaw

SCBU Donation

The Special Care Baby Unit recently received a kind donation from local councillor and former mayor of Prescott, Paul Shaw.

Paul raised £234 selling CDs and music tapes at car boot sales, charity evenings with donations, and local raffles from local business. Paul, along with his daughters Beth (aged 9) and Emily (aged 5) who were both born at Whiston Hospital, came along to present the cheque to the Unit's team of expert paediatricians.

This money will go towards providing babies on the Unit with the special care that they require.

OUT OF AFRICA
CHRISTMAS PARTY

A Glamorous Party in Colonial Africa

THE GRAND MARQUEE, KNOWSLEY SAFARI PARK, MERSEYSIDE, 2009



- Luxury starlit themed marquee
- Treetops bar with pre-dinner entertainment
- Festive Dinner with competitions and novelties
- Live Extravaganza show
- Disco 'til the small hours
- Charity Fun Casino

Take the hassle out of organising your christmas party

Call now for more information
0845 7573043
www.jdparties.co.uk

Book a Christmas Party Extravaganza for either 'Puttin on the Ritz' at Tatton Park or 'Out of Africa' at Knowsley Safari Park, for Thursday 3rd, Sunday 13th or Wednesday 23rd December minimum 10 guests and receive tickets at £39.50 per person. Applicable for bookings made in September, subject to availability. Quote NHS1 to make your booking.

Your chance to have your say - and win a fitness prize!

In support of the current National NHS Staff Satisfaction Survey, the Trust with the help of the Village Hotel, Whiston are giving you the chance to have your views heard and win a fabulous fitness package.

Simply complete your staff survey and return by Freepost to Quality Health (as detailed in the survey documentation) to be entered into a prize draw to win a 3 month Gold Package at the luxurious Village Health & Fitness Club. The winner of this great prize will have full access, any time of day to the whole range of leisure facilities including swimming pool, gym, sauna, Jacuzzi and spa.



The draw will be made in January 2010, the winner will be selected at random from completed surveys by Quality Health and will be announced in the February 2010 issue of News n Views.

Christmas at VILLAGE Hotel, Liverpool



- Party and Tribute Nights from £24.95 pp
- Golden Years Lunch with entertainment - £12.95 pp
- NEW for 2009
- Family Panto Lunch £15.95 per adult / £7.95 per child
- Christmas Day Lunch £55.00 per adult / £29.95 per child
- Boxing Day Lunch £14.95 per adult / £8.95 per child
- New Years Eve in victory pub - £30.00 pp
- New Years Eve Gala Dinner - £60.00 pp

For more details contact the Sales Office on

0151 449 2341



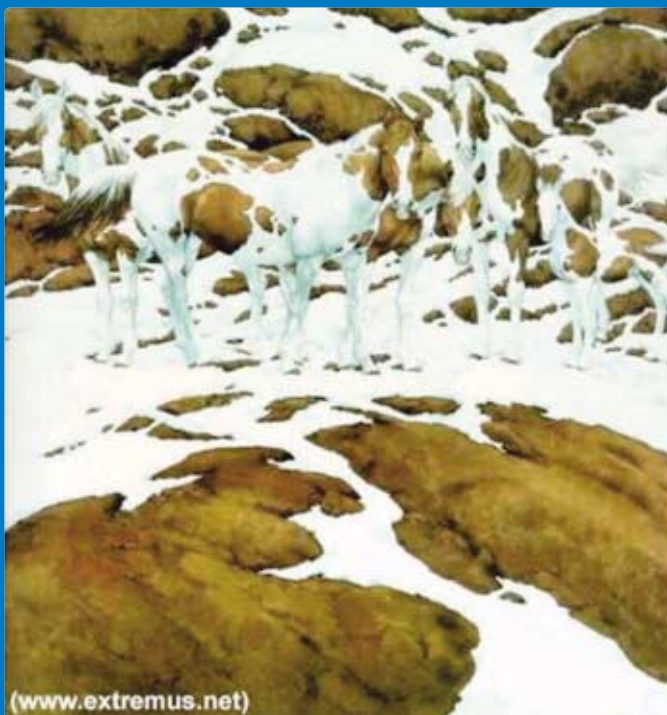
Village Hotel, Fallows Way,
Whiston, Merseyside, L35 1RZ.
Junction 6 M62/Junction 1 M57

Email vilsales@village-hotels.com
village-hotels.co.uk



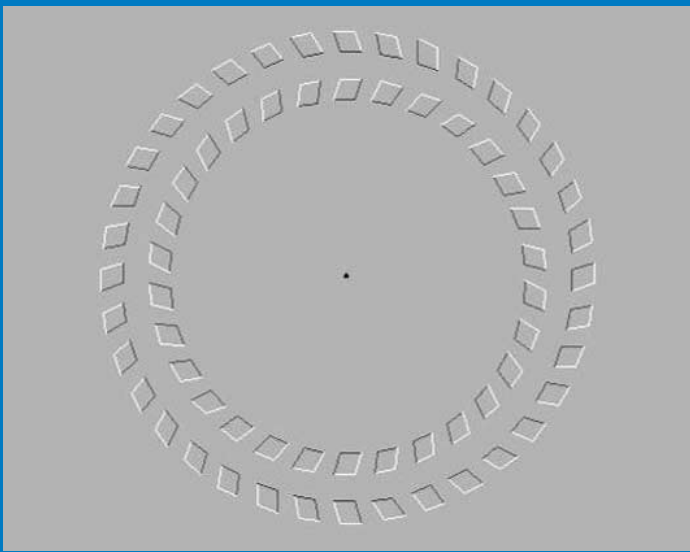
It's all an **illusion!**

Can you count 7 horses in this picture?



(www.extremus.net)

Focus on the dot in the centre and move your head backwards and forwards - weird!



IT Operations Help Desk
(0151) 676 5678
ithelpdesk@sthk.nhs.uk

Switchboard 0
Security, Fire, Emergency 3333
Cardiac Arrest 2222

Local Security Management
Specialist (0151 430 1611)
Hospital Pager 1372

Facilities Management Helpdesk 1188

Did you know?



- Michael Jackson and rock band Santana hold the record for the most Grammys won in one night, with a total of eight.
- The top selling single of all time is Elton John's "Candle in the Wind 1997".
- Chocolate is the number one foodstuff flavour in the world
- An ounce of chocolate contains about 20 mg of caffeine.
- A group of rhinos is called a crash.
- The electric chair was invented by a dentist.
- Donald Duck's middle name is Fautleroy.
- Whoopi Goldberg's real name is Caryn Elaine Johnson.
- Camel's milk does not curdle.
- The hyoid bone, in your throat, is the only bone in the body not attached to another bone.

Staff **News 'n' Views**

Next Issue: December 2009

Many thanks to everyone who has been involved in producing this edition.

If you would like to contribute, please contact Judith Marsland, Head of Media, PR and Communications on 0151 430 2505 or judith.marsland@sthk.nhs.uk

The deadlines for submitting items for News 'n' Views in 2009 are:

December edition – 27th November