

How successful is laser iridotomy?

Laser iridotomy is very successful. However, occasionally the small hole can partly or completely heal up in the first few days after the laser treatment. Further laser treatment might be necessary following your review in clinic. This is usually very successful. Laser iridotomy is very good at protecting against acute angle closure glaucoma.

If you require any further information or advice, please contact a member of staff on the telephone numbers below.

Contact us immediately if you have any urgent symptoms such as:

- Increased redness of your eye
- Increasing pain
- Vision disturbance such as double vision or loss of vision.

For further advice please contact the eye clinic between 9am-5pm, Monday to Friday on 01744 646 136/37 to speak to a nurse.

St Helens Hospital
Marshalls Cross Road,
St Helens, Merseyside, WA9 3DA
Telephone: 01744 26633

www.MerseyWestLancs.nhs.uk

Peripheral iridotomy

Information for patients

If you need this leaflet in a different language or accessible format please speak to a member of staff who can arrange it for you.

اگر به این بروشور به زبان دیگر یا در قالب دسترس پذیر نیاز دارید، لطفاً با یکی از کارکنان صحبت کنید تا آن را برای شما تهیه کند.

Jeśli niniejsza ulotka ma być dostępna w innym języku lub formacie, proszę skontaktować się z członkiem personelu, który ją dla Państwa przygotowuje.

Dacă aveți nevoie de această broșură într-o altă limbă sau într-un format accesibil, vă rog să discutați cu un membru al personalului să se ocupe de acest lucru pentru dumneavoastră

如果您需要本传单的其他语言版本或无障碍格式，请联系工作人员为您安排。

إذا احتجت إلى هذه النشرة بلغة أخرى، أو بتنسيق يسهل الوصول إليه، يرجى التحدث إلى أحد الموظفين لترتيب ذلك لك.

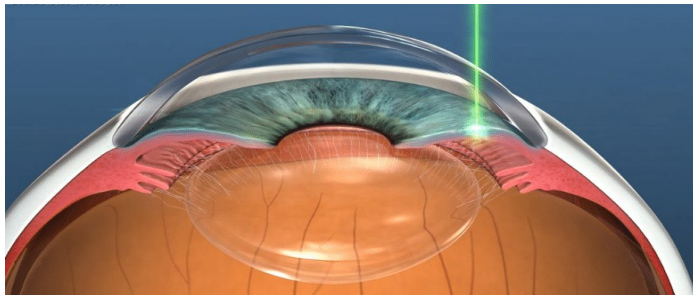
Author: Lead nurse
Department: Ophthalmology
Document Number: MWL2450
Version: 001
Review Date: 01/01/2028

What is Peripheral iridotomy?

There are many different types of glaucoma and the treatments are varied. Laser iridotomy is a treatment that is used for patients who have, or who are at risk of developing, acute angle closure glaucoma, or who have chronic closed or narrow angle glaucoma.

Acute angle closure glaucoma occurs when the flow of the watery fluid, called aqueous humour, becomes blocked and builds up causing the pressure in the eye to become very high very quickly. Chronic closed or narrow angle glaucoma can occur when the iris (coloured part of your eye) is pushed forward onto the delicate drainage system, which then restricts the flow of aqueous humour so that the pressure within the eye goes up.

Laser iridotomy is used in these cases, to prevent the pressure rising in patients at risk. The laser delivers a highly concentrated beam of energy which is used to make a small hole in the iris. This small hole allows the aqueous humour to flow freely into the front chamber of the eye.



What happens on the day of treatment?

Expect your appointment to take approximately 3 hours. The nurse will check your vision and put some drops into your eye, to make your pupil smaller. These drops are used to prevent the pressure rising within your eye. The drops take up to one hour to work. The doctor will take your written consent and explain further if you have any questions. You will also have anesthetic drops put into your eye to numb the front surface.

Once seated in front of the laser machine, which is similar to the microscope used to examine you in clinic, a special lens will be placed against the front surface of your eye. During the laser treatment you will hear clicking noises. You might feel a slight pain, lasting a second or less and it could feel a little strange.

After the laser treatment, you will have further drops put in your eyes to help reduce any inflammation caused by the laser. The pressure in your eye will be checked about an hour after the treatment, before you go home. You will then receive a prescription for drops to use at home and an appointment to come back to the clinic.

Are there any risks or side effects of this treatment?

Your vision could be slightly blurred for a few hours following your laser treatment, but this will settle. If you are concerned that your vision is not returning to normal, please contact the hospital on the numbers below. Do not drive yourself to the hospital, as you will be unable to drive home.

There might be a little bleeding inside your eye, which will initially blur your vision; however this will clear in a few days' time. Your eye might feel slightly bruised afterwards and sometimes your eye could become inflamed, but the drops you have been given to use will control any inflammation and should help to relieve discomfort.

You might wish to take pain relieving medication, for example paracetamol, to relieve any additional discomfort. If you are already taking pain relief for a different condition continue with those, but do not take both.

It is possible for the pressure in your eye to increase immediately after the treatment. In order to prevent this, we put in some special drops before and immediately after the treatment.

The small hole in your iris is usually hidden under the upper eyelid and cannot be seen with the naked eye. However, very occasionally, it can cause glare or other problems. If you suffer with glare or other problems following your treatment, please contact a member of staff on the numbers on the next page.